



Model DS212

Optical Swing Turnstile

The Optical swing turnstile is a classic and highly favored choice with its fully stainless-steel brushed appearance and three-color light bar indicators.

It is designed to control pedestrian entry or exit in restricted areas, and is commonly used in high-grade occasions in both directions.

The turnstile's body is robust, rigid, anti-rust, waterproof, and durable.

Features

- Two way or one way working.
- Support integrated with any type of access control systems.
- Passage width can be 600-850mm.
- Lower power consumption.
- Low noise, system runs smoothly.
- Blue, green and red LED indicator display passing status.
- Fire safety requirements, arms open automatically.
- Easy to install and maintain.
- Indoor or outdoor.
- 3 years warranty support.

Customized Service

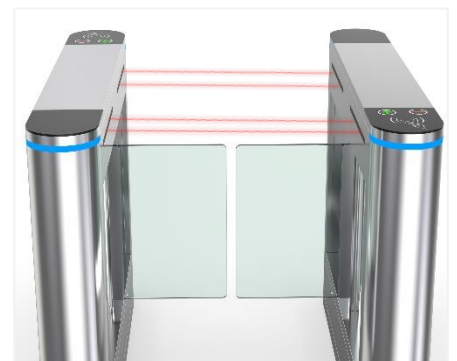
- Appearance color can be customized based on installation environment.
- Dimensions can be customized to meet your request.
- Logo can be customized.
- Arm width optional.
- Arm LED light optional.
- Arm material: Plexiglas or glass(optional)
- Infrared sensor optional.
- Picture: high resolution and scene picture can be customized.



Logo Custom



Fire Safety Requirements,
Arms Open Automatically



Infrared Sensor



LED Light



Anti-reverse Function



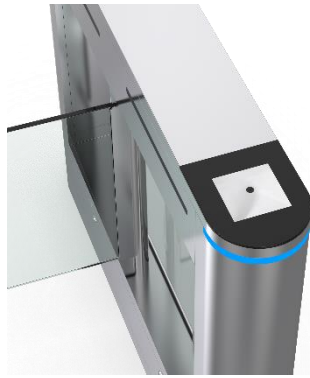
Wide Passage

Access Control System

Daosafe turnstile gates can be well integrated with any 3rd party access control systems



Card Solution



QR/Bar Code Solution



Biometric Solution



Remote Control



Touchless Button



Card



QR Code



Fingerprint



Face



Palm Vein

Two lanes for card solution installed at office buildings



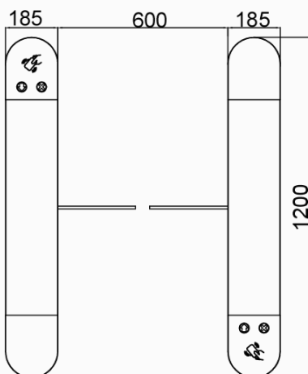
Specifications

Model No.	DS212
Type	Optical Swing Turnstile Gate
Brand	Daosafe
Framework Material	304 Stainless Steel+ Plexiglas Arm + Full Glass on side
Arm material	Plexiglas transparency
Dimension	Standard: 1200 * 185 * 1000mm Optional: 1300 * 185 * 1000mm
Net Weight	60kg/pcs (single core) 70kg/pcs (double core)
Passage Width	600-850mm (standard) 900mm (optional)
Passing Direction	Single directional / Bi-directional
MCBF	10 million
Power Supply	AC220V/110V, 50/60Hz
Operation Voltage	24V DC
Power Consumption	40W
Operation Temperature	-20 °C - 75 °C
Operation Humidity	0 ~ 95% (No freeze)
Working Environment	Indoor / Outdoor (shelter)
Flow Rate	40 people per minute
LED Indicator	Two LED indicators on top: green → entry. red × no entry
Infrared Sensor	4 pairs
Emergency	Automatic arm open when power off
Communication	Dry contact, Relay signal, RS485
Flexibility	Integrate with any access control

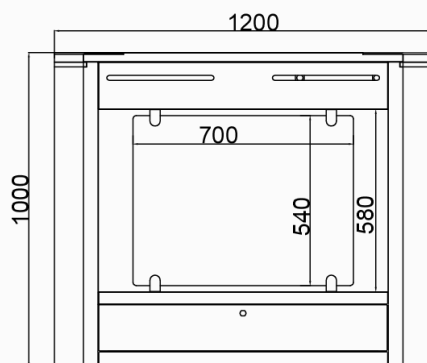


Dimensions

Top View



Side View



Front View

